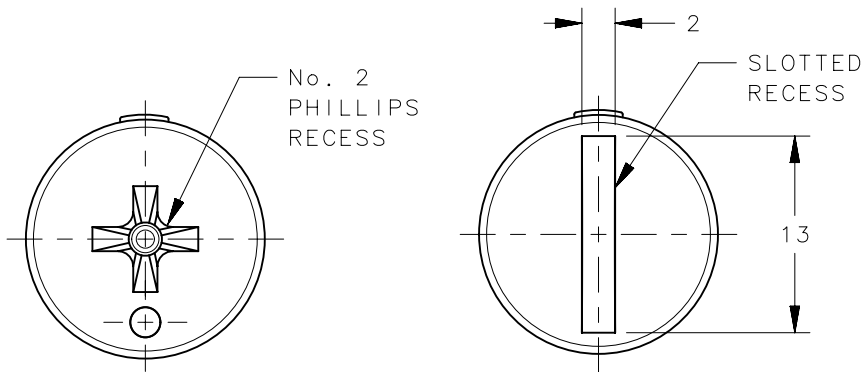
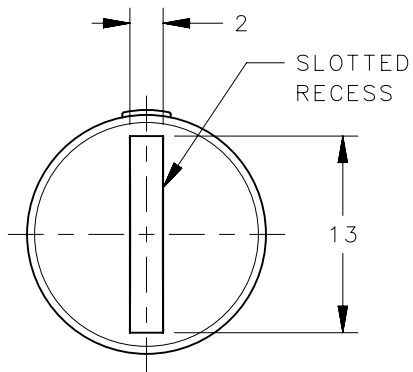


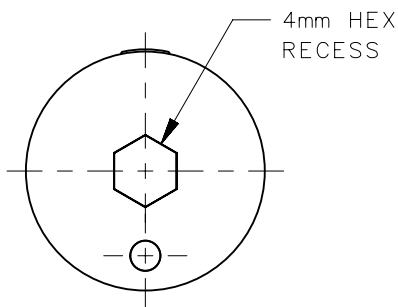
REVISION HISTORY			
REV	DATE	BY	DESCRIPTION
B	10MAY2017	LCR/CMS	PRN: P2017-1097



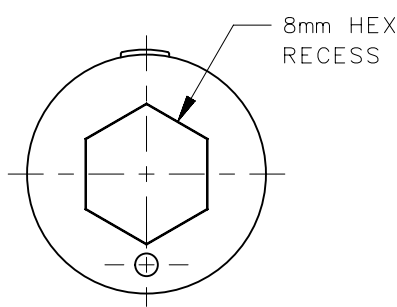
PK-0-34027-XX



PK-0-43489-XX

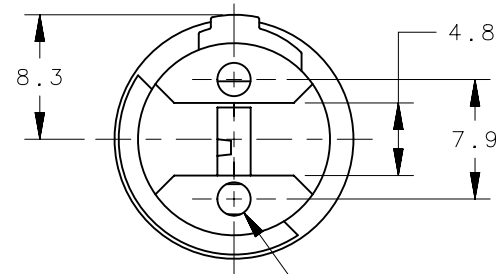
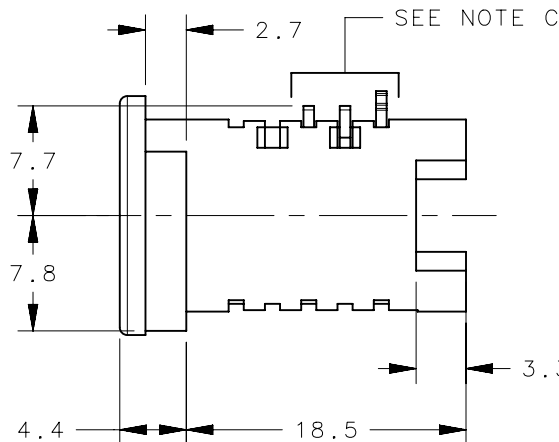
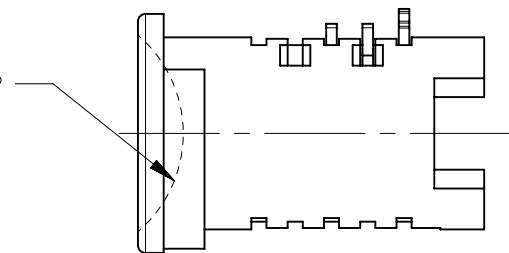


PK-0-34323-XX

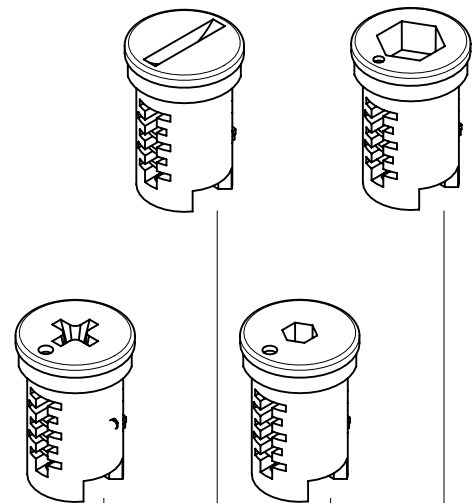
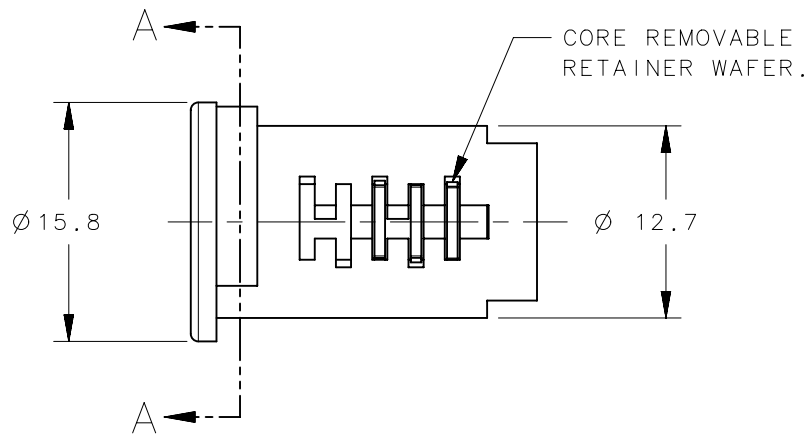


PK-0-40374-XX

R X 3 DEEP  
SLOTTED  
RECESS



2X Ø2.2 X 3.3 DEEP



PHILLIPS RECESS		SLOT RECESS		4mm HEX RECESS		8mm HEX RECESS	
PK-0-34027-01	PK-0-34027-50	PK-0-43489-01	PK-0-43489-50	PK-0-34323-01	PK-0-34323-50	PK-0-40374-01	PK-0-40374-50

LOCKPLUG BODY	ZAMAK 3	CHROME PLATED		X		X		X		X	
		BLACK POWDER COATED			X		X		X		X
WAFERS	BRASS	NATURAL		X	X						
SPRING	STAINLESS STEEL	NATURAL		X	X						
SPRING	STAINLESS STEEL	PASSIVATE		X	X						
TYPE OF COMPONENT		MATERIAL		FINISH		LOCK PLUG ASSEMBLY PART NUMBERS					

NOTES:

A. POWDER COAT IS ONLY ON HEAD OF PLUG ABOVE SECTION A-A.

B. RoHS COMPLIANT.

C. BEFORE INSTALLATION, ADD GREASE TO WAFERS FOR PROPER OPERATION. GREASE SHOULD BE COMPATIBLE WITH LOCK COMPONENT MATERIAL AND LATCH MATERIAL. GREASE VISCOSITY SHOULD BE LIGHT ENOUGH TO ALLOW WAFERS TO RETURN TO EXTENDED POSITION AFTER BEING DEPRESSED INTO LOCK BODY.

THIRD ANGLE  
PROJECTION

MILLIMETERS [IN]

TOLERANCES UNLESS OTHERWISE NOTED

ALL DIMENSIONS WITHOUT  
TOLERANCES ARE FOR  
REFERENCE ONLY.

PER ASME Y14.5M-1994

**southco®**  
CONNECT • CREATE • INNOVATE

LOCK PLUG  
TOOL OPERABLE

SIZE A3 SYSTEM NX DWG NO. J-PK-9-TOOL-OP

DRAWN BY MJS/LCR DATE 21MAY2013 SCALE 2:1 SHEET 1 OF 1